

## ELECTRONIC VOLUMETERS

# TME 400 VM/VC

TME 400 (Turbine Meter Electronic) type volumeters offer a number of advantages over classical mechanical turbine meters like display of actual flow rate, data and parameter archiving, various interfaces and optionally integrated volume correction.



# METHOD OF OPERATION AND CONSTRUCTION

## Introduction

The new type TME 400 volumeters are turbines designed for secondary metering (non custody transfer operation) with purely electronic totalizers. In contrast to mechanical turbine meters, in the TME 400 the volume flow is converted in the mechanical meter body to electrical impulses, which are transmitted to the electronic meter head where they are processed.

In this way, the TME 400 can not only display and save the totalizer reading, but also, for example, the actual flow rate. In addition, several totalizers can be realized and the meter can transmit its measured values as well as additional signals directly via various interfaces (pulses, analog, digital). Furthermore, the version TME 400-VC offers a fully-fledged volume corrector integrated in the meter head, including pressure and temperature measurement.

It calculates the standard volume besides operating flow rate and operating volume. An external volume corrector is no longer needed. For all TME 400 versions, a long-lasting backup battery ensures continued reliable operation even in the case of a complete power failure.

## TME 400-VM

The TME 400-VM (Volume Meter) is the basic version of the TME 400 family. As the abbreviation VM indicates, it is a so-called volumeter, i.e. a pure operating volume meter for non-custody transfer applications.

## Features

- **Electronic totalizers**  
Main totalizer, additional start-stop or resettable totalizer for low flow (or slow down) cut-off by external signal.
- **Low-torque metering system with long-term stability**  
Turbine design with a minimum of moving parts.
- **Battery or mains operation** Autonomous operation with lithium cell for 6+ years or external power supply and backup battery to protect against power failures.
- **Explosion protection** The TME 400 is intrinsically safe and can be used in zones 1 and 2.
- **Outputs** Pulse outputs HF and LF (variable), alarm output, current output (4-20 mA, optional).
- **Flow display**
- **Digital interface**  
serial RS 485 interface for Modbus connection.
- **Storage of maximum value (Qm)**
- **Archive** Integrated fail-safe parameter, event and measured value archive.
- **RMGView<sup>TME</sup>** Provided software for convenient parameterization and management of device and stored data.



TME 400-VM



TME 400-VC

## TME 400-VC

The TME 400-VC (Volume Corrector) combines all features of the TME 400-VM with the benefits of a fully integrated non-custody transfer PTZ volume corrector. Pressure and temperature measurement are integrated directly into the meter.

## Additional Features (VC)

- **Volume corrector** Integrated fully-fledged compact volume corrector including digital pressure and temperature measurement.
- **Calculation of the K coefficient** according to SGERG88, AGA8 GROSS M1 and M2 as well as AGA NX19.
- **Display** Operating volume, standard volume, current and maximum flow can be displayed in measurement and standard condition.
- **Separate Terminal block** Inputs for pulses, pressure and temperature can be sealed separately from the rest. The lithium battery can be exchanged without opening the case.

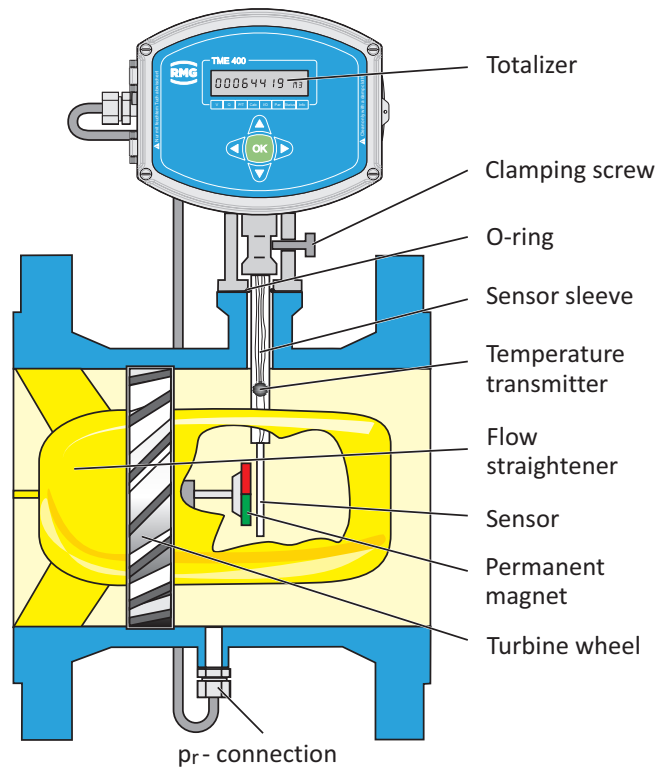
## Method of Operation

With turbine gas meters, the gas flow strikes a mechanically mounted turbine wheel and drives it. The rotational speed of the turbine wheel is proportional to the flow rate of the gas. Since the gas flows through an invariable cross section (annular gap of the turbine wheel), the flow velocity is also proportional to the volume flow.

TME 400 VM and TME VC are based on the on the trusted RMG Volumeter series TRZ03-K. Dimensions and metrological performance are identical for both.

In the TME 400, a magnetic disk is mounted on the shaft of the turbine wheel, rotating at the same speed as the turbine wheel. A Wiegand sensor scans that disk and generates one electrical pulse per revolution which is transmitted to the electronic meter head. Each pulse is directly proportional to a certain volume flow. The meter can therefore display both the current flow (QM) and the total flowed volume (VM).

Furthermore, the volume corrector integrated in the TME 400-VC allows the calculation of the standard volume (VB). In order to do this, the meter measures operating pressure and operating temperature in addition to the operating volume flow. From this, the standard volume flow can be calculated using a suitable equation of state together with the corresponding standard conditions. Then this value is summed up in the standard volume totalizer and stored in the data logger.



## Electronic Totalizer

Possible connections for the electronic totalizer:

Connection	Type	U <sub>max</sub>	U <sub>min</sub>	I <sub>max</sub>	T <sub>pulse</sub>	f <sub>max</sub>
Pulse output HF direct signal frequency	Transistor, open collector	30 V	4.0 V	30 mA	1 ms	250 Hz
Pulse output LF reduction programmable	Transistor, open collector	30 V	4.0 V	30 mA	20 ms 125 ms 250 ms	25 Hz
Interface	RS 485	10.5 V	6.0 V	200 mA	–	–
Switch input for stopping the totalizer	Switching contact	potential-free	–	–	–	–
Current output (option) Version with a current board	4-20 mA, 2 wires	30 V	12 V	23 mA	I <sub>min</sub> 3.5 mA	Error < 0.5% of final value**

# TECHNICAL DATA

Nominal size		Measuring range Qmin - Qmax	Pulse value HF	Pressure loss $\Delta p$
mm	in.	m <sup>3</sup> /h	pulses/m <sup>3</sup>	mbar
25	1	2,5 - 25	13450	3
40	1½	6 - 70	7800	4
50	2	6 - 100	7800	5
80	3	13 - 160	2375	3
		16 - 250	2375	6
		25 - 400	1250	14
100	4	25 - 400	1060	4
		40 - 650	600	10
150	6	40 - 650	330	3
		65 - 1000	330	6
		100 - 1600	190	12
200	8	100 - 1600	135	3
		160 - 2500	80	8
250	10	160 - 2500	75	3
		250 - 4000	44	7
300	12	250 - 4000	48	4
		400 - 6500	28	9
400	16	400 - 6500	24	3
		650 - 10000	14	8
500	20	on request		
600	24	on request		

The pulse value for LF pulses can be programmed from 0.01 to 100 pulses/m<sup>3</sup> with a maximum output frequency of 25 Hz.

## Pressure Loss

The pressure loss  $\Delta p$  stated in the table applies to natural gas at  $Q_{max}$  and 1 bar (a). From this, the pressure loss at measurement conditions can be calculated in accordance with the formula below.

Pressure loss as per the formula

$$\Delta p_m = \Delta p \cdot \frac{\rho_b}{0.83} \cdot p_m \cdot \left( \frac{Q_m}{Q_{max}} \right)^2$$

$\Delta p_m$  = Pressure loss at measurement conditions ( $p_m, Q_m$ ) in mbar

$\Delta p$  = Pressure loss at  $Q_{max}$  with natural gas at 1 bar in mbar (see table)

$\rho_b$  = Standard density of the gas in kg/m<sup>3</sup>

$p_m$  = Pressure at meas. conditions in bar(a)

$Q_m$  = Flow rate at meas. conditions in m<sup>3</sup>/h

$Q_{max}$  = Maximum flow rate in m<sup>3</sup>/h (see table)

Example:

Air, nominal meter size DN 100,  
measuring range 20 - 400 m<sup>3</sup>/h,  $p_m = 1.1$  bar (a),  
 $\rho_b = 1.29$  kg/m<sup>3</sup>,  $Q_m = 250$  m<sup>3</sup>/h.

Take from the table:  $\Delta p = 4$  mbar.

Hence the result using the above formula:

$\Delta p = 2.7$  mbar.

## Technical Data

Explosion protection	II 2G Ex ia IIC T4 Gb
Degree of protection	IP 65
Ambient temperature	-25°C - +55°C
Medium temperature range	-20°C - +60°C
Temperature transmitter	PT 1000
Pressure ranges	0.8 - 2,5 bar(a) 0.8 - 6,0 bar(a) 2.0 - 10 bar(a) 4.0 - 20 bar(a)
Power supply	Standard lithium battery with 3.6 V (service life 6+ years) Service life of the standby battery with 24 V/DC external power supply via interface or current output 10+ years
Outputs	3 transistor outputs: - HF - LF (puls width programmable) - Fault 4 - 20 mA analog output (only with external power supply), electrically isolated
Interface	RS 485 (Modbus protocol) / external power supply

# FACTS, APPROVALS, CONNECTION

## Types of Gas

The TME 400 standard design is suitable for all gases complying with DVGW Code of Practice G260. The materials used are appropriate for industrial gases and fuel gases, such as unmodified and modified natural gases, processed biogas and all non-corrosive gases. For corrosive gases, there are special designs available with PTFE lining, special material, special lubrication, etc.

## Measuring Accuracy (Natural GAS)

Measuring error	Q <sub>min</sub> to 0.2 · Q <sub>max</sub>	0.2 · Q <sub>max</sub> to Q <sub>max</sub>
DN 25	± 3%	± 2%
DN 40, DN 50	± 3%	± 1,5%
DN 80	± 3%	± 1%
≥ DN 100	± 2%	± 1%
Reproducibility: ≤ ± 0.1%		

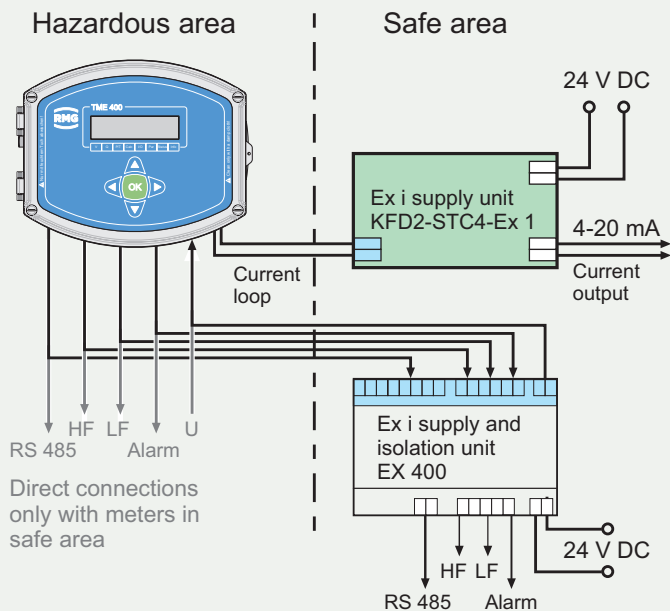
## Maintenance

All turbine meters up to and including the nominal size of DN 150 are fitted with permanently lubricated bearings and require no maintenance. From the nominal size of DN 200, the meters are fitted with a lubricator. Lubrication has to be performed in compliance with the operating instructions (see also lubrication instruction plate on the meter).

## Approvals

EU type examination according to

- Explosion protection directive 2014/34/EU as per certificate of conformity No.: TÜV 17 ATEX 207566 X  
Marking: II 2 G Ex ia IIC T4 Gb
- Pressure equipment directive 2014/68/EU as per certificate No.: ISG-22-12-1979\_Rev. K



## Connection of Outputs

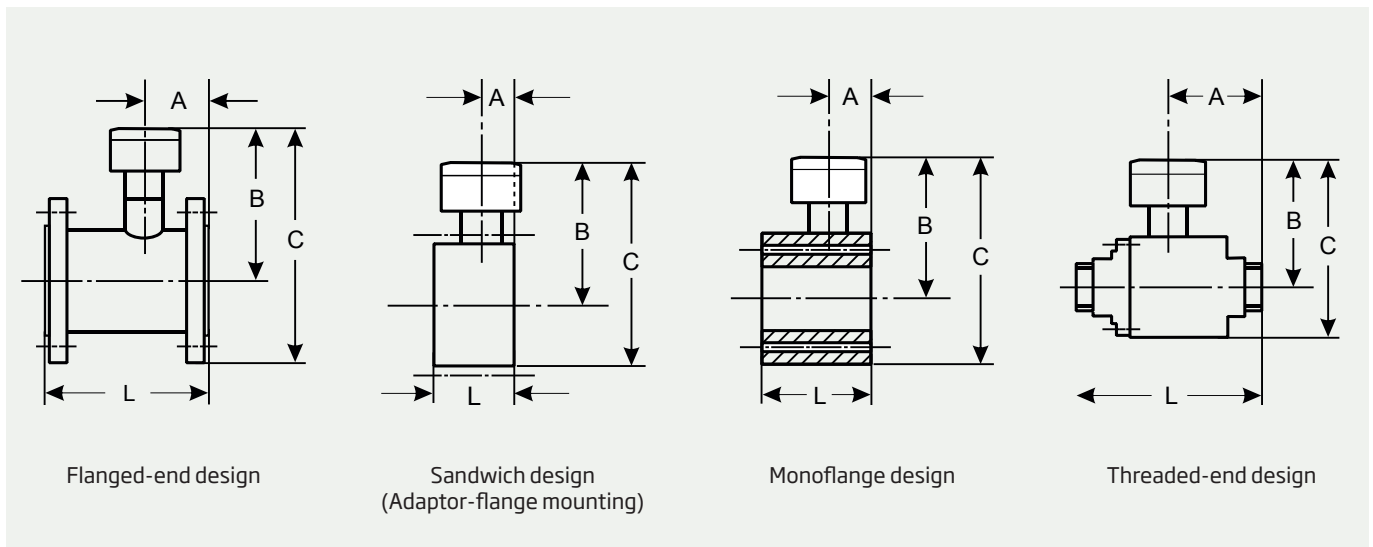
Example for installation in areas subject to explosion hazards

### Current output 4-20 mA possible:

When installing in hazardous areas, a galvanic isolation of the outputs and the interface is required. The device EX 400, which can be delivered for this purpose as an accessory, can also serve as power supply.

Optionally, the TME 400 can be equipped with an external driven current output (4-20 mA).

# TYPES OF CONSTRUCTION AND DIMENSIONS



Case design	Weights and measures						Pressure rating				
	Nominal size mm	L mm	A mm	B mm	C mm	Weight kg*	PN 10 PN 16	PN 25 ANSI 150	PN 40	ANSI 300	ANSI 600
Threads	25**	185	80	145	195	4	○				
	40***	140	80	145	195	12	▲				
Flanges	50	150	60	180	265	10	●	●	●	●	
	80	120	35	180	315	14	●	●	●		
	100	150	50	215	345	25	●	●	●		
	150	175	70	225	410	40	●	●	●		
	200	200	70	225	470	60	●	●	●		
	250	300	135	280	540	70	■	■			
	300	300	95	320	580	100	■	■			
		450	200	325	610	200			■	■	■
400	600	145	325	650	180	■	■				
	600	345	335	680	400			■	■	■	
Mono-flanges	50	80	60	175	255	15					●
	80	120	35	200	300	35				●	●
	100	150	50	225	335	50				●	●
	150	175	70	270	445	100				●	●
	200	200	70	305	510	130				●	●
	250	250	85	345	590	200			●	●	●
Sandwich	50	80	30	145	195	12	▲	●			

Nominal sizes DN 500 / DN 600 and special designs on request.

- Steel/spheroidal cast iron
- Aluminium
- Steel, welded design
- ▲ Stainless steel

\* The weights are approximate values, devices with a lower pressure rating can have a lower weight.

\*\* External thread R 1½"; with coupling kit: internal thread Rp 1 ISO 7-1, overall length 243 mm, max. pressure for combustible gases: 5 bar

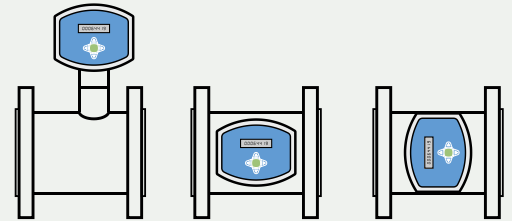
\*\*\* External thread R 2¼"; with coupling kit: internal thread Rp 1½ ISO 7-1, overall length 206 mm

# INSTALLATION OPTIONS, ARCHIVES, SOFTWARE

## Options for Installing the Totalizer

With the TME 400-VM the meter head can be mounted standing or lying as well as rotated about the vertical axis. For TME 400-VC the meter head is mounted standing in any case due to the pulse piping required.

For both the TME 400-VM and the TME 400-VC the remote totalizer option for a separated mounting of the meter head in a distance of max. 10 m from the meter body is available.



## Archives

Parameter changes, meter readings and events are stored in the archives and for the TME 400-VC additionally measured values.

The memory depth is in each case:

- Parameter archive (custody transfer) 300
- Parameter archive (secondary) 300
- Event archive 200
- Periodic archive 9000
- Daily archive 100
- Monthly archive 25

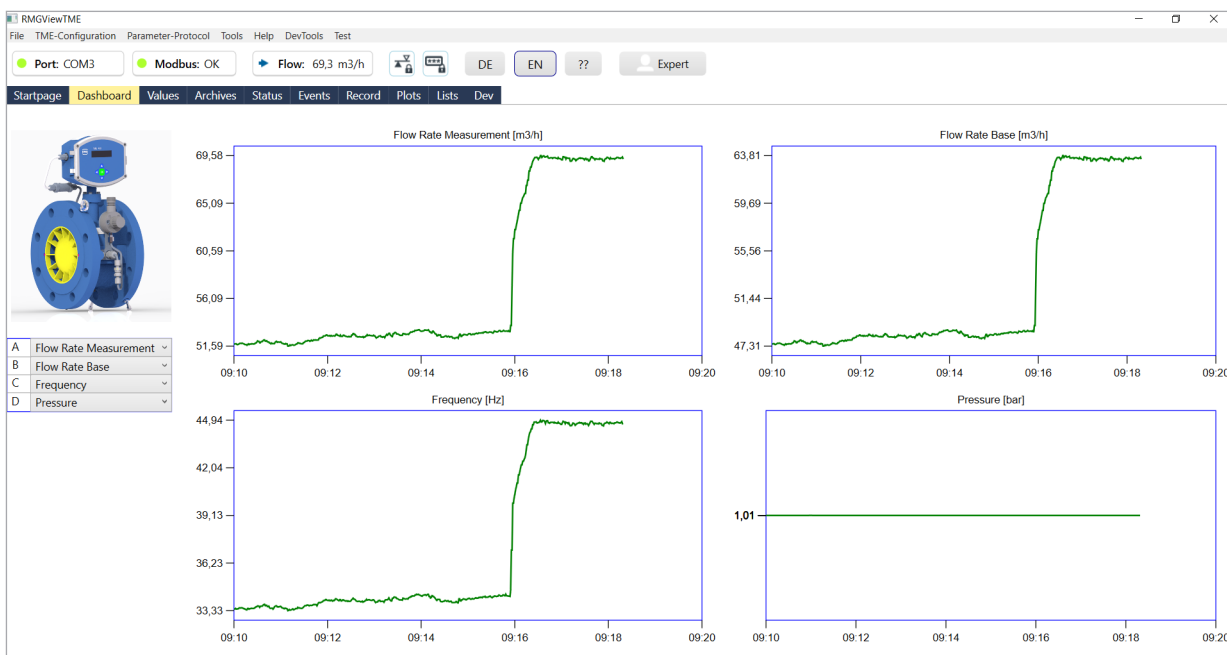
The measuring period can be set to 15, 30 or 60 minutes.

## Operating software RMGView<sup>TME</sup>

The provided RMGView<sup>TME</sup> software allows direct access to the measuring electronics with a PC. The most important functions are:

- Readout of all parameters
- Change of parameters (with open calibration switch)
- Graphical display of measured values
- Creating test certificates and data sheets and their output in pdf format
- Reading out the archives
- Export of parameters and archive data in Excel readable format

The software is easy to use and all the data is displayed systematically in clearly arranged tables. It is also possible to combine selected measured values and parameters in user-defined tables.





ONE STEP AHEAD

---

### **RMG Messtechnik GmbH**

Otto-Hahn-Straße 5  
35510 Butzbach  
Germany

Tel. +49 (0) 6033 897-0  
Fax: +49 (0)6033 897-130  
Mail [info@rmg.com](mailto:info@rmg.com)

[www.rmg.com](http://www.rmg.com)

### **For More Information**

To learn more about products and solutions from RMG visit [www.rmg.com](http://www.rmg.com)  
or contact your account manager.  
Technical data is subject to change without notice.